

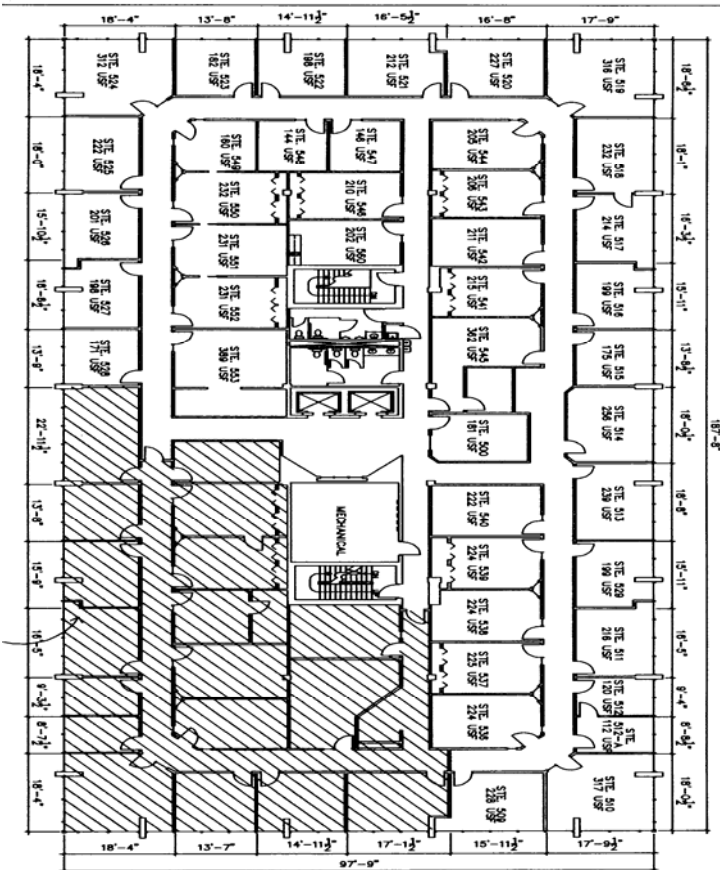
# For Lease: Twin Towers Office Park

1106 Clayton Lane – Austin, TX 78723

**Photo: Twin Towers**



**Floorplan: Suite # 501**



**Size:**

5,685 Rentable Square Feet

**Availability:**

Immediate

**Term:**

2-7 years

**Rental Rate:**

\$16.00 full service

True gross lease (no pass thru expenses)

**Space Details:**

Nice space built out with 12-14 offices, conf rooms, training rooms, kitchen and storage.

**Building Details:**

Conveniently located near 290 & I-35 behind Texas Land and Cattle. Building has large free conference room, 24-hour security guard, on-site management, atrium with trees, FedEx drop box and a generous 4.5/1000 parking ratio.

**For More Information, Contact:**

**Matt Watson**

Austin Office Space, Inc.

512.349.9675 Office

[mwatson@AustinOfficeSpace.com](mailto:mwatson@AustinOfficeSpace.com)

For immediate showings contact:

**Alice Sparks**

512.454.3661 Office

[ultramgt@aol.com](mailto:ultramgt@aol.com)